



# 1500W/2500W 7 ELEMENT OIL-FILLED RADIATORS

MODEL NO'S: **RD1500.V6 & RD2500.V6**

Thank you for purchasing a Sealey product. Manufactured to a high standard, this product will, if used according to these instructions, and properly maintained, give you years of trouble free performance.

**IMPORTANT:** PLEASE READ THESE INSTRUCTIONS CAREFULLY. NOTE THE SAFE OPERATIONAL REQUIREMENTS, WARNINGS & CAUTIONS. USE THE PRODUCT CORRECTLY AND WITH CARE FOR THE PURPOSE FOR WHICH IT IS INTENDED. FAILURE TO DO SO MAY CAUSE DAMAGE AND/OR PERSONAL INJURY AND WILL INVALIDATE THE WARRANTY. KEEP THESE INSTRUCTIONS SAFE FOR FUTURE USE.



Refer to instructions



Do not cover



Indoor use only

## 1. SAFETY

### 1.1. ELECTRICAL SAFETY

- WARNING!** It is the user's responsibility to check the following:

Check all electrical equipment and appliances to ensure that they are safe before using. Inspect power supply leads, plugs and all electrical connections for wear and damage. Sealey recommend that an RCD (Residual Current Device) is used with all electrical products. You may obtain an RCD by contacting your local Sealey stockist.

If the heater is used in the course of business duties, it must be maintained in a safe condition and routinely PAT (Portable Appliance Test) tested.

#### 1.1.1. ELECTRICAL SAFETY INFORMATION

It is important that the following information is read and understood.

Ensure that the insulation on all cables and on the appliance is safe before connecting it to the power supply.

Regularly inspect power supply cables and plugs for wear or damage and check all connections to ensure that they are secure.

**IMPORTANT:** Ensure that the voltage rating on the appliance suits the power supply to be used and that the plug is fitted with the correct fuse - see fuse rating in these instructions.

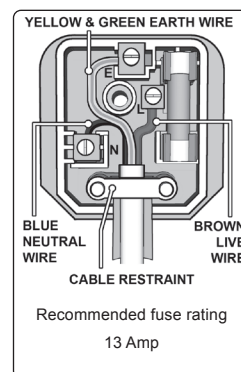
- ✗ **DO NOT** pull or carry the appliance by the power cable.
- ✗ **DO NOT** pull the plug from the socket by the cable.
- ✗ **DO NOT** use worn or damaged cables, plugs or connectors. Ensure that any faulty item is repaired or replaced immediately by a qualified electrician.

#### 1.1.2. This product is fitted with a BS1363/A 13 Amp 3 pin plug.

- ✓ If the cable or plug is damaged during use, switch the electricity supply off and remove from use.
- ✓ Ensure that repairs are carried out by a qualified electrician.
- ✓ Replace a damaged plug with a BS1363/A 13 Amp 3 pin plug. If in doubt contact a qualified electrician.
  - Connect the GREEN/YELLOW earth wire to the earth terminal 'E'.
  - Connect the BROWN live wire to the live terminal 'L'.
  - Connect the BLUE neutral wire to the neutral terminal 'N'.
- ✓ Ensure that the cable outer sheath extends inside the cable restraint and that the restraint is tight.
- ✓ Sealey recommend that repairs are carried out by a qualified electrician.

### 1.2. GENERAL SAFETY

- WARNING!** Disconnect the heater from the mains power, before servicing or performing any maintenance, which must only be carried out by an authorised service agent. Report any oil leakage immediately to an authorised service agent.
- ✓ Replace or repair damaged parts. Use recommended parts only. Unauthorised parts may be dangerous and will invalidate the warranty.
- ✓ Ensure that the heater is used in an area larger than 4m<sup>2</sup>. Allow a few centimetres of clearance from any surface, and ensure there is good overhead clearance for heat circulation.
- ✓ Only use the heater in an upright position.
- WARNING! DO NOT** tamper with the wiring, heating element or oil. The system is a sealed unit. The breaking of any seal may be dangerous, will damage the heater and will invalidate the warranty.
- ✗ **DO NOT** use the heater for anything other than its intended purpose. It is designed for providing heat in enclosed areas, no smaller than 4m<sup>3</sup>, such as offices, homes, workshops etc. It is not suitable for drying clothes or laundry.
- ✗ **DO NOT** place the heater close to a bath, wash basin, shower, swimming pool or any other water-filled area or wet surface. **DO NOT** get the heater wet or use in areas of high condensation.
- ✗ **DO NOT** place the heater up against any surface such as a wall, door, furniture etc.
- ✗ **DO NOT** place the heater immediately below any electrical outlet.
- ✗ **DO NOT** allow the power lead to touch the radiator surface.
- ✗ **DO NOT** cover the radiator or use it to dry laundry.
- ✗ **DO NOT** switch the heater on whilst the electrical lead is wrapped on the storage bracket.
- ✗ **DO NOT** store the electrical lead until the radiator is cold.
- ✗ **DO NOT** attempt to repair a damaged heater, contact an authorised service agent.
- ✗ **DO NOT** stand on the heater.
- ✗ **DO NOT** touch the heating elements when the heater is on as it becomes very hot.
- ✓ Operators must read this manual or receive adequate training before using the heater.
- ✓ Children should be supervised at all times when the heater is in use.
- ✓ Ensure that the heater is correctly turned off when not in use and store in a safe, dry area, out of reach of children.



**NOTE:** This appliance can be used by children aged from 8 years and above and persons with reduced physical, sensory or mental capabilities or lack of experience and knowledge if they have been given supervision or instruction concerning use of the appliance in a safe way and understand the hazards involved. Children shall not play with the appliance. Cleaning and user maintenance shall not be made by children without supervision.

## 2. INTRODUCTION

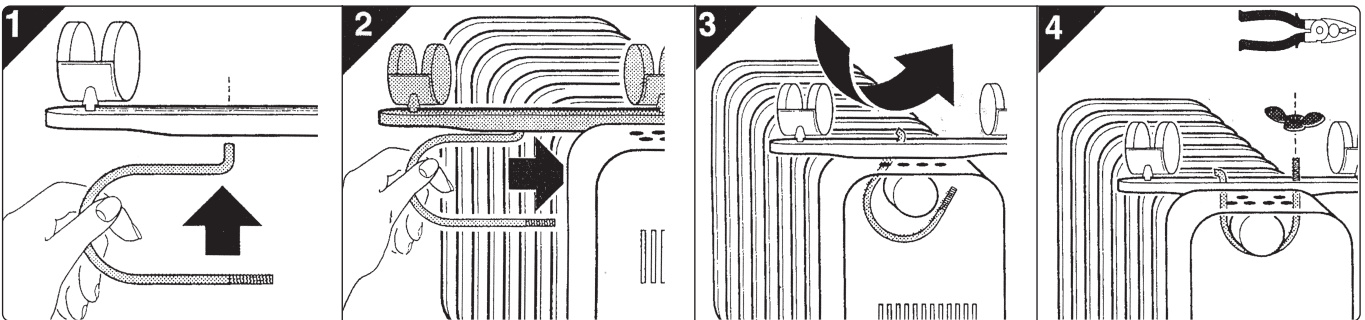
Oil-filled radiator suitable for office, home, showroom and workshop use. Manufactured to rigorous safety standards and fitted with a 13Amp BS approved plug. Features full thermostatic heat control that cuts power to the heater elements when pre-set temperature is attained and tilt safety switch. Elements designed to maximise area of the heated surface in order to transfer more heat to the atmosphere. Fitted with castors for added mobility.

## 3. SPECIFICATION

Model No:..... RD1500.V6/RD2500.V6  
 Power:..... 1500W/2500W  
 Size (W x D x H):.....340 x 240 x 614/480 x 240 x 624mm  
 Supply:.....230V

## 4. ASSEMBLY

- 4.1. Invert the radiator after removal from packaging, oil should be heard flowing internally under gravity, this is expected and not a problem.
- 4.2. Attach the castor wheels by passing the stud through the underside of the wheel plate and securing with the supplied nut. Mount the castor wheel plate between the first and second element of each end of the radiator. Tighten the wing nuts on the metal "U" bolts; return the radiator to the upright position; oil should be heard flowing internally under gravity and your heater is ready to use when the flowing ceases fig.1.
- 4.3. Check the unit is the correct way up by observing carrier handle apertures are at the top and the cable tidy is at the bottom, also the thermostat "LOW" and "HIGH" instruction is further confirmation.  
**SAFETY FEATURE-** The tilt safety switch will isolate supply if accidentally tipped over or if assembled upside down.



## 5. OPERATION

- 5.1. **HEATING SETTINGS** fig.2
  - 5.1.1. Unwrap the mains lead and plug it into the power supply.
  - 5.1.2. Turn the thermostat control to the highest setting.
  - 5.1.3. Choose the required heat output by selecting the appropriate switch, this switch will illuminate when pressed.  
 Low setting:.....Select switch with the Roman Numeral "I".  
 Medium setting:.....Select switch with the Roman Numeral "II". Set switch with "I" to off.  
 High setting:.....Select both switches "I" and "II".
  - 5.1.4. Once the required room temperature has been achieved, turn the thermostat down until the light on the selected heat setting switch goes out. The heater will then keep the surrounding air at the set temperature by switching on and off at intervals. You may reset the thermostat at any time.
  - 5.1.5. To switch the unit off, turn the heat selecting switches off and unplug from the mains. Allow the unit to cool before handling or storage.
  - 5.1.6. The heater is fitted with a safety tilt switch and a thermostatic safety cut-out which will automatically turn the heater off should it be placed in circumstances that cause overheating or malfunction. Should this happen, switch the heater off and disconnect it from the mains. Allow the heater to cool before handling. Do not use the heater again until the cause has been identified and remedied. If necessary return the heater to your Sealey stockist for servicing.
  - 5.1.7. When used for the first time, it is suggested that you set the heater to maximum power for a few minutes in a well ventilated room to eliminate the newness smell, typical of this type of heater.

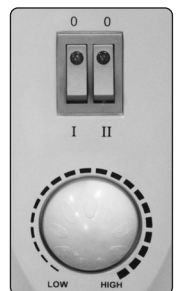


fig.2

## 6. MAINTENANCE

- ☐ **WARNING!** Disconnect the heater from the mains power, before servicing or performing any maintenance, which must only be carried out by an authorised service agent with the exception of the following.
- 6.1. Dust the radiator (when cold) with a dry cloth.
  - × **DO NOT** use a strong abrasive to clean the radiator.
- 6.2. When storing the heater, use the original shipping box and store in a safe, dry location.  
**Note:** Report any oil leakage immediately to an authorised service agent.



#### ENVIRONMENT PROTECTION

Recycle unwanted materials instead of disposing of them as waste. All tools, accessories and packaging should be sorted, taken to a recycling centre and disposed of in a manner which is compatible with the environment. When the product becomes completely unserviceable and requires disposal, drain any fluids (if applicable) into approved containers and dispose of the product and fluids according to local regulations.



#### WEEE REGULATIONS

Dispose of this product at the end of its working life in compliance with the EU Directive on Waste Electrical and Electronic Equipment (WEEE). When the product is no longer required, it must be disposed of in an environmentally protective way. Contact your local solid waste authority for recycling information.

**Note:** It is our policy to continually improve products and as such we reserve the right to alter data, specifications and component parts without prior notice. Please note that other versions of this product are available. If you require documentation for alternative versions, please email or call our technical team on [technical@sealey.co.uk](mailto:technical@sealey.co.uk) or 01284 757505.

**Important:** No Liability is accepted for incorrect use of this product.

**Warranty:** Guarantee is 12 months from purchase date, proof of which is required for any claim.

Sealey Group, Kempson Way, Suffolk Business Park, Bury St Edmunds, Suffolk. IP32 7AR



01284 757500



01284 703534



[sales@sealey.co.uk](mailto:sales@sealey.co.uk)



[www.sealey.co.uk](http://www.sealey.co.uk)



## Information requirements for electric local space heaters

Model identifier(s): RD1500.V6					
Item	Symbol	Value	Unit	Item	Unit
<b>Heat output</b>				<b>Type of heat input, for electric storage local space heaters only (select one)</b>	
Nominal heat output	$P_{nom}$	0.7088	kW	Manual heat charge control, with integrated thermostat	Yes No <input checked="" type="checkbox"/>
Minimum heat output (indicative)* * Enter figure or NA	$P_{min}$	0.4377	kW	Manual heat charge control with room and/or outdoor temperature feedback	Yes No <input checked="" type="checkbox"/>
Maximum continuous heat output	$P_{max,c}$	0.7088	kW	Electronic heat charge control with room and/or outdoor temperature feedback	Yes No <input checked="" type="checkbox"/>
				Fan assisted heat output	Yes No <input checked="" type="checkbox"/>
<b>Auxiliary electricity consumption</b>				<b>Type of heat output/room temperature control (select one)</b>	
At nominal heat output	$eI_{max}$	0.000	kW	Single stage heat output and no room temperature control	Yes No <input checked="" type="checkbox"/>
At minimum heat output	$eI_{min}$	0.000	kW	Two or more manual stages, no room temperature control	Yes No <input checked="" type="checkbox"/>
In standby mode	$eI_{SB}$	0.000	kW	With mechanic thermostat room temperature control	Yes <input checked="" type="checkbox"/> No
				With electronic room temperature control	Yes No <input checked="" type="checkbox"/>
				Electronic room temperature control plus day timer	Yes No <input checked="" type="checkbox"/>
				Electronic room temperature control plus week timer	Yes No <input checked="" type="checkbox"/>
				<b>Other control options (multiple selections possible)</b>	
				Room temperature control, with presence detection	Yes No <input checked="" type="checkbox"/>
				Room temperature control, with open window detection	Yes No <input checked="" type="checkbox"/>
				With distance control option	Yes No <input checked="" type="checkbox"/>
				With adaptive start control	Yes No <input checked="" type="checkbox"/>
				With working time limitation	Yes No <input checked="" type="checkbox"/>
				With black bulb sensor	Yes No <input checked="" type="checkbox"/>
Contact details: Sealey Group, Kempson Way, Suffolk Business Park, Bury St Edmunds, Suffolk, IP32 7AR. <a href="http://www.sealey.co.uk">www.sealey.co.uk</a>					
v1					ERP Table 2